

# A Snapshot of Selected Demographic & Economic Conditions in Spokane

■ start something **big**

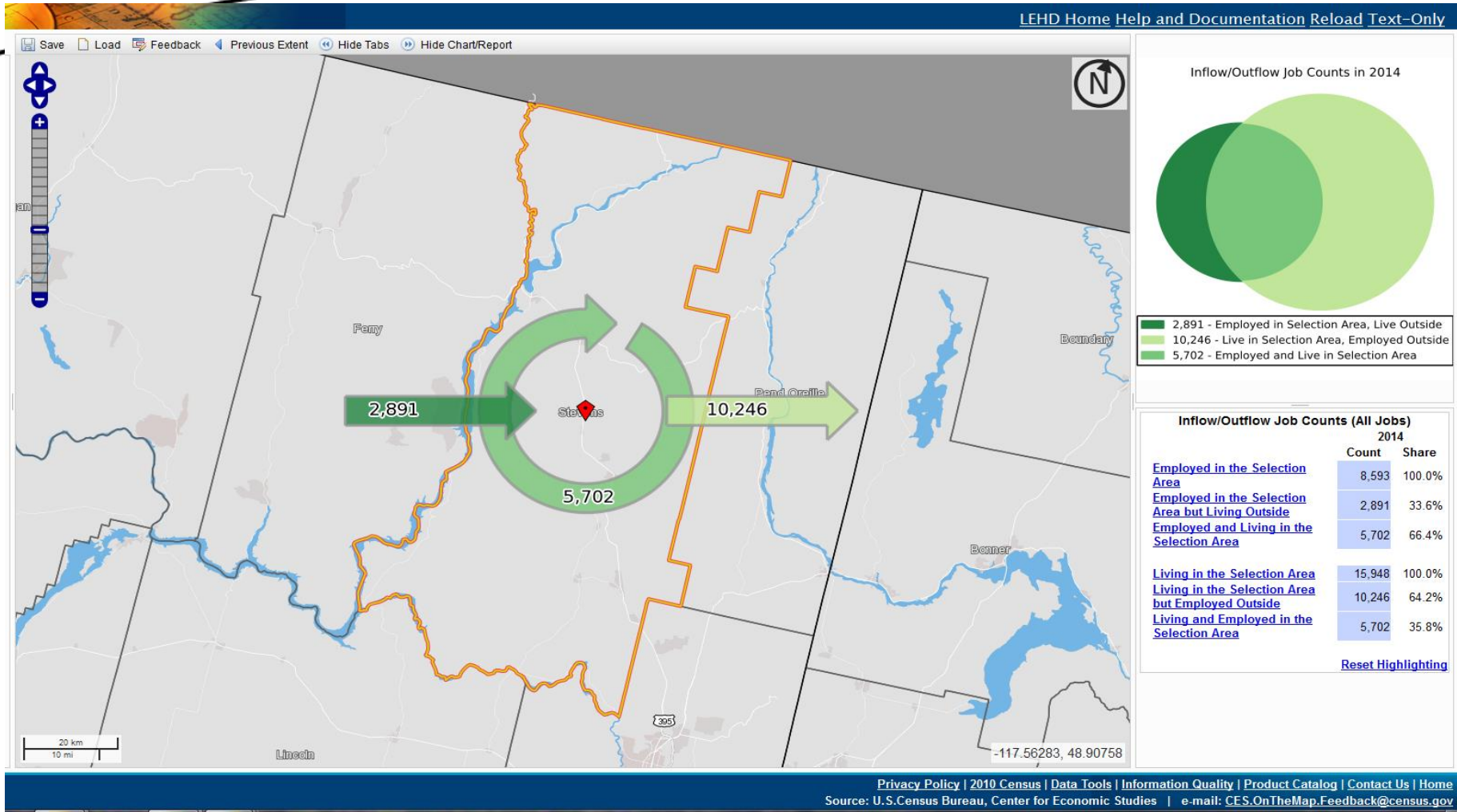


Presentation to the PNREC Conference

May 12, 2016

# Spokane's MSA has expanded – due to economic weakness in surrounding rural counties (here, Stevens County)

start something big

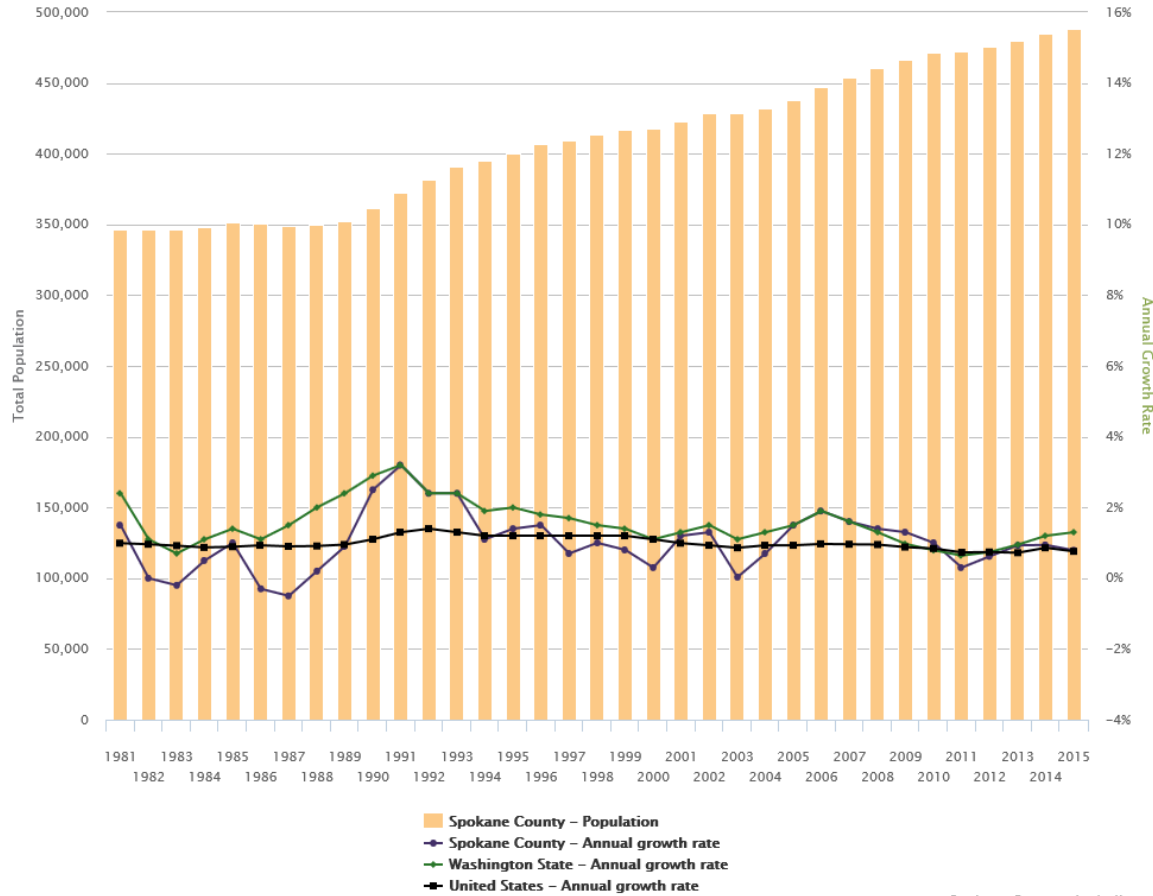


# County's recent population growth – dropping to U.S. rate

start something big



### 0.1.1 Total Population & Annual Growth Rate

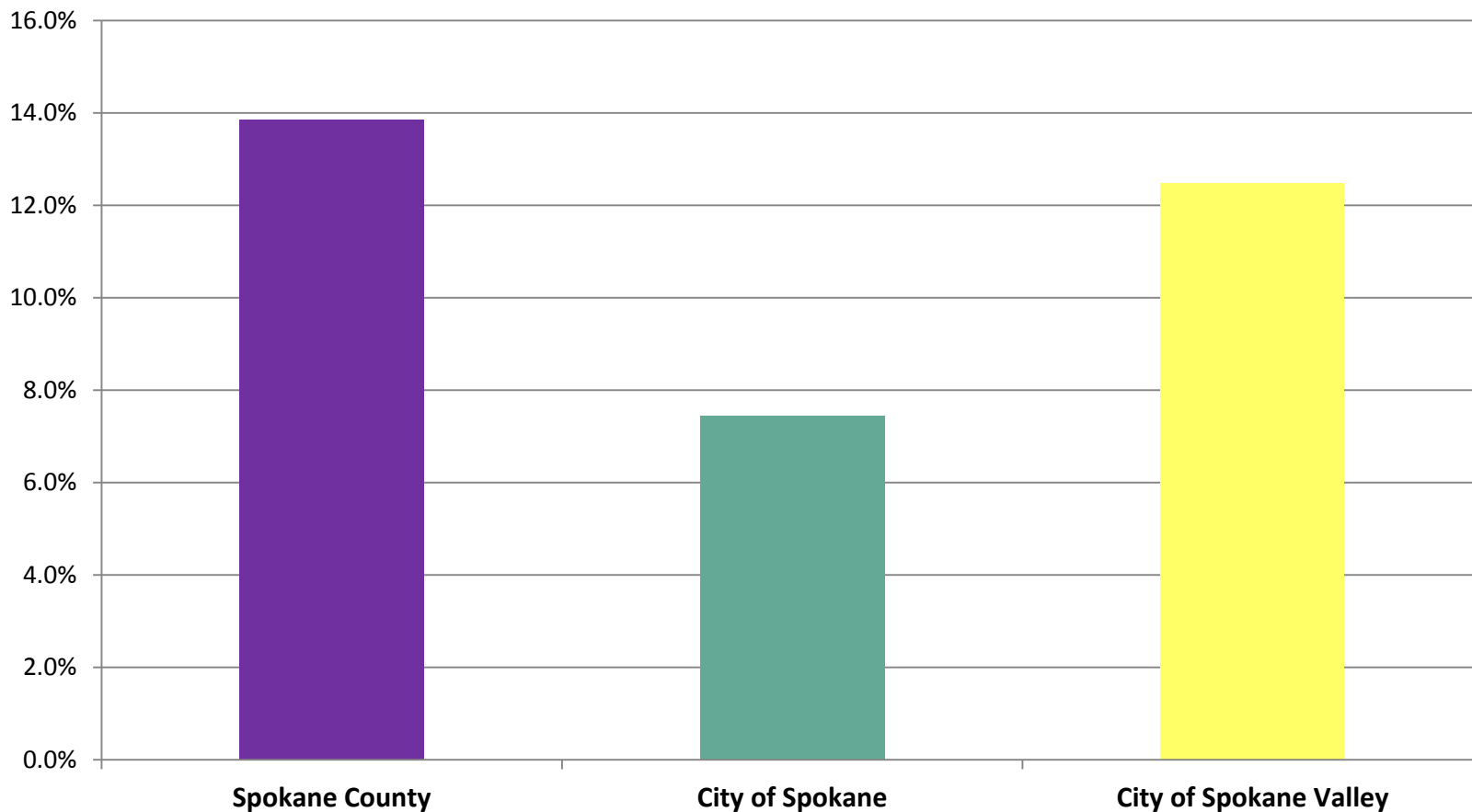


Spokane Community Indicators



# Spokane's population growth has varied by location: 2003-15 cumulative rate

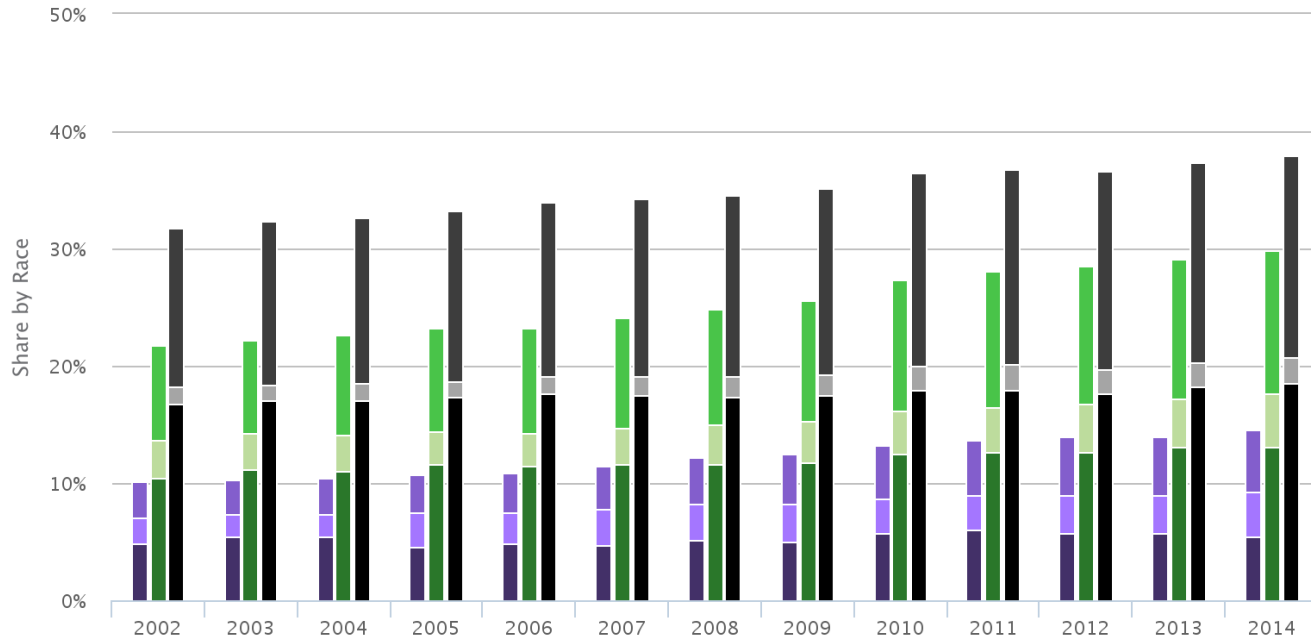
■ start something **big**



# County share of minorities remains low

start something **big**

## 0.2.3 Non-White Population as a Share of Total Population



- Spokane County – Black Asian Native American and Other
- Spokane County – Two or More Races
- Spokane County – Hispanic (may be of any race)
- Washington State – Black Asian Native American and Other
- Washington State – Two or More Races
- Washington State – Hispanic (may be of any race)
- United States – Black Asian Native American and Other
- United States – Two or More Races
- United States – Hispanic (may be of any race)

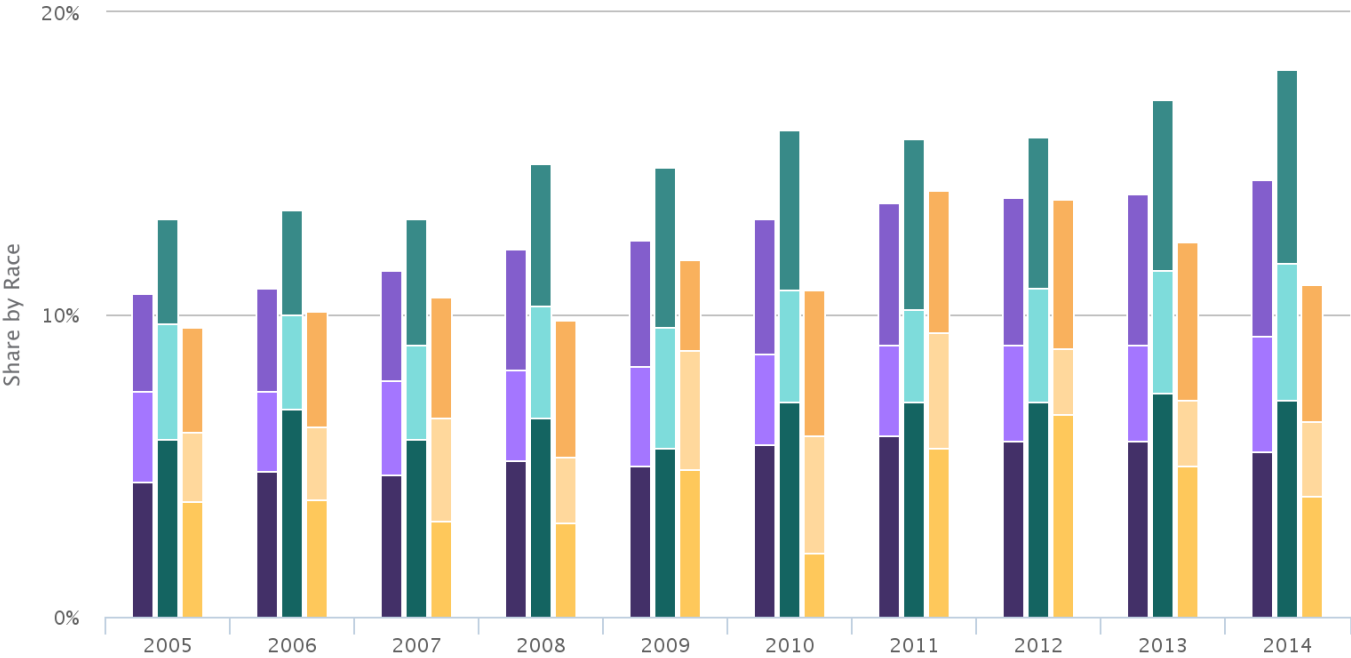
Spokane Community Indicators



# But City of Spokane is considerably less white

start something big

### 0.2.3 Non-White Population as a Share of Total Population



- Spokane County - Black Asian Native American and Other
- Spokane County - Two or More Races
- Spokane County - Hispanic (may be of any race)
- City of Spokane - Black Asian Native American and Other
- City of Spokane - Two or More Races
- City of Spokane - Hispanic (may be of any race)
- City of Spokane Valley - Black Asian Native American and Other
- City of Spokane Valley - Two or More Races
- City of Spokane Valley - Hispanic (may be of any race)

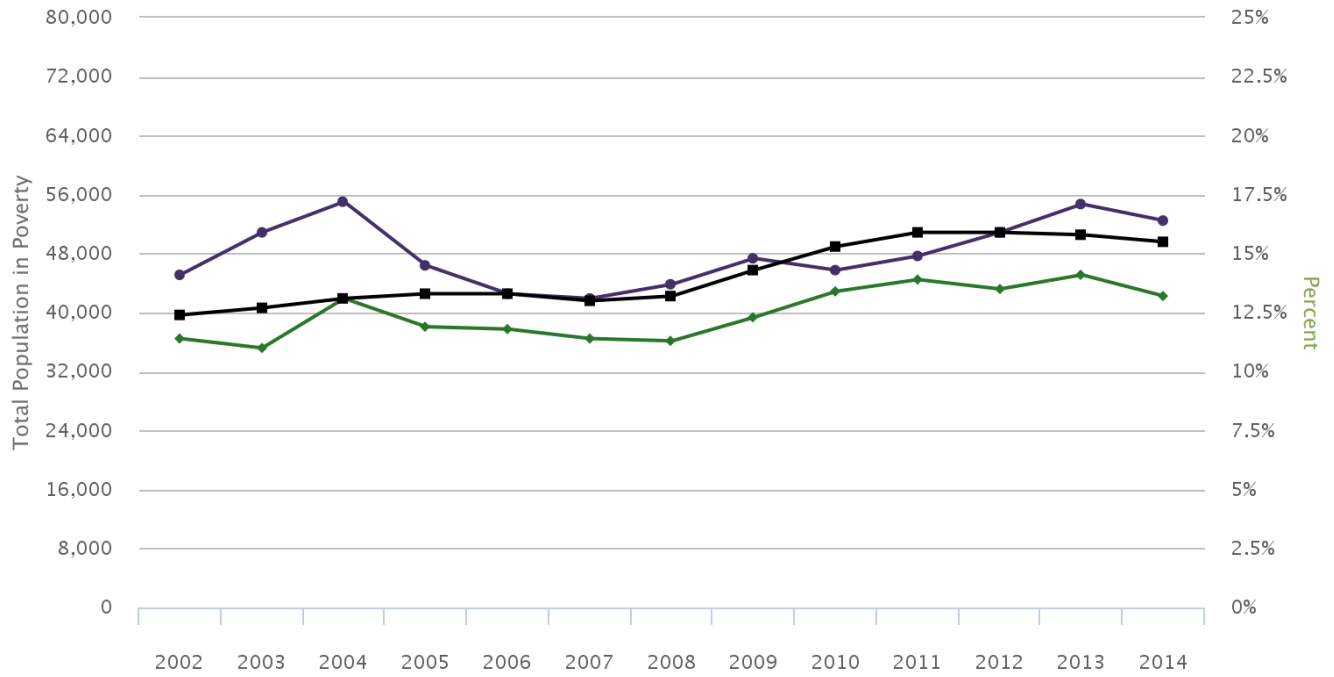
Spokane Community Indicators



# County's poverty fared more poorly than U.S. & WA after Great Recession

start something **big**

2.5.1 Share of Total Population Living Below Federal Poverty Level



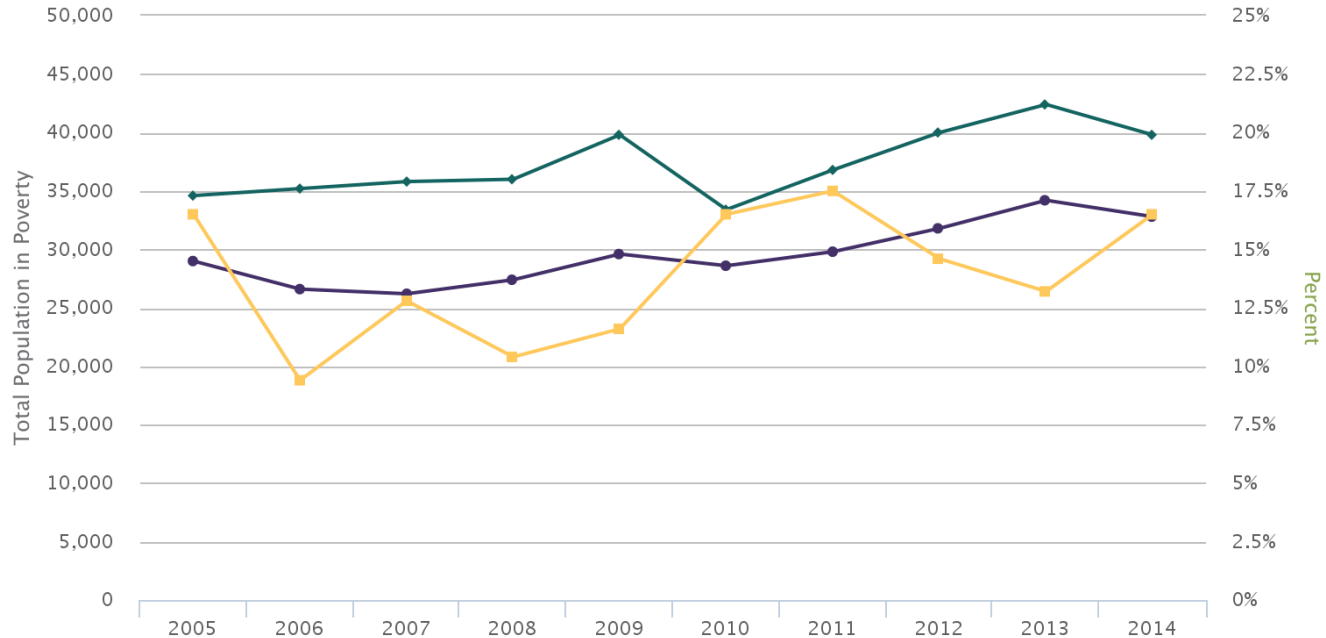
- Spokane County - Total Population in Poverty
- Spokane County - Share of Population in Poverty
- ◆ Washington State - Share of Population in Poverty
- United States - Share of Population in Poverty

Spokane Community Indicators

# City of Spokane's poverty: higher than County's

start something big

2.5.1 Share of Total Population Living Below Federal Poverty Level



- City of Spokane - Total Population in Poverty
- City of Spokane Valley - Total Population in Poverty
- ◆ Spokane County - Share of Population in Poverty
- ◆ City of Spokane - Share of Population in Poverty
- ◆ City of Spokane Valley - Share of Population in Poverty

Spokane Community Indicators

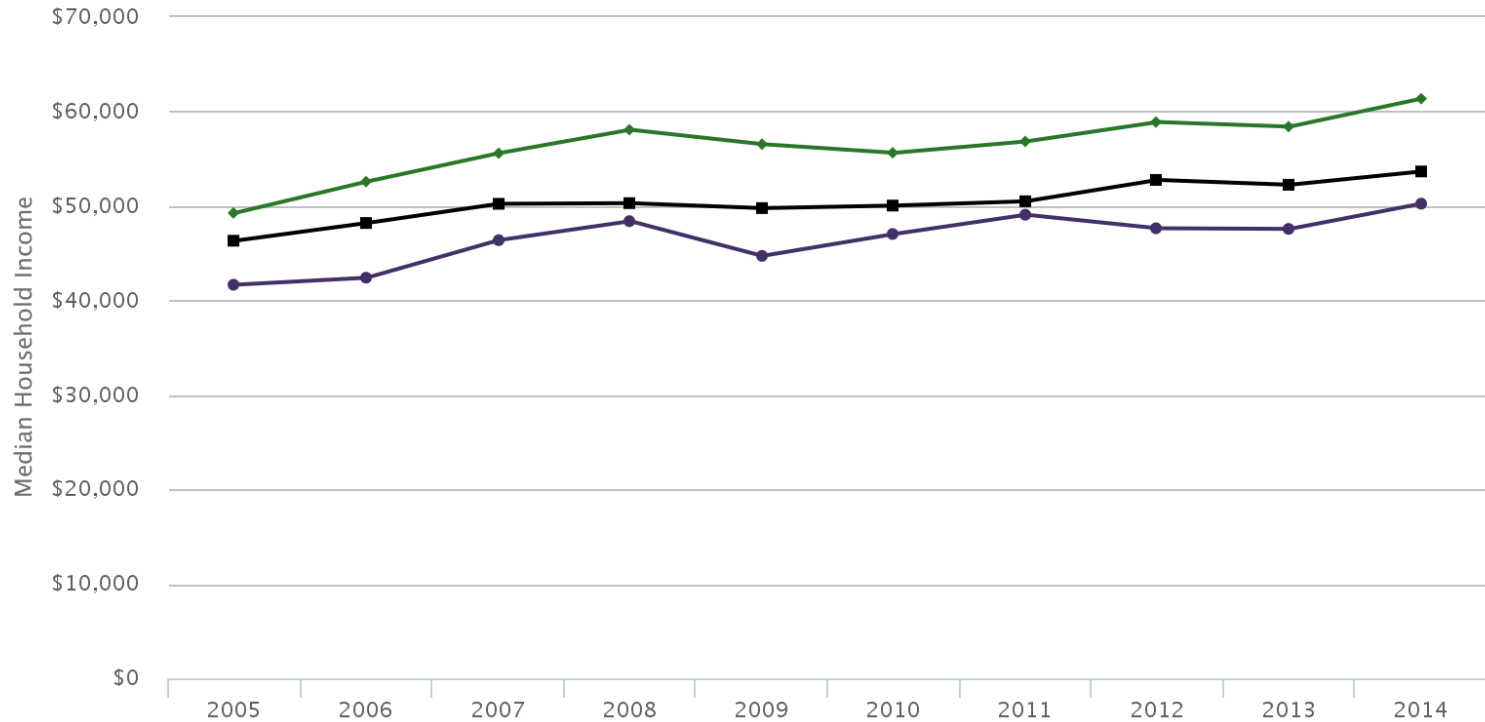




# County median income has lagged that of US by some, WA by a lot

start something **big**

### 2.1.2 Median Household Income



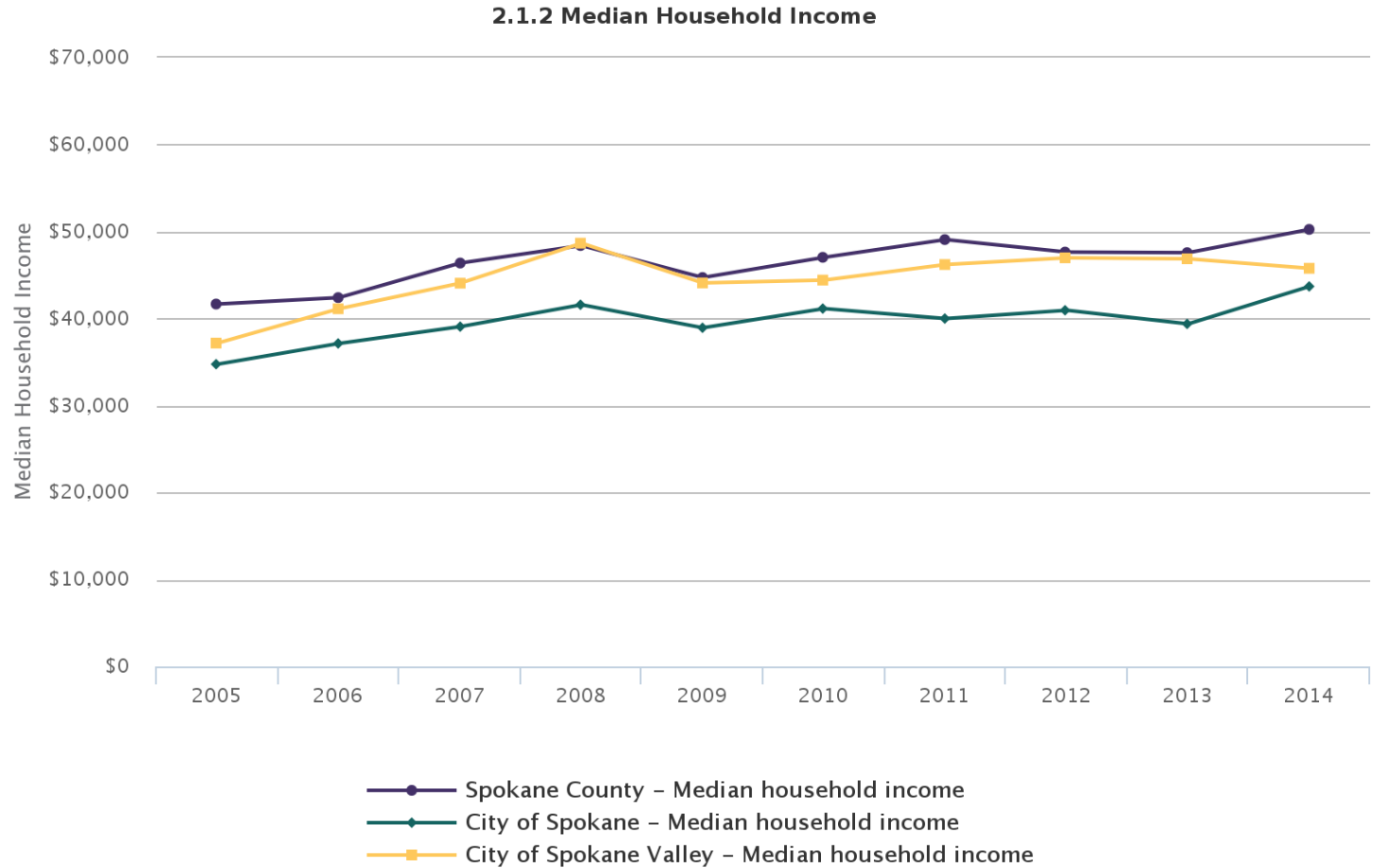
- Spokane County - Median household income
- Washington State - Median household income
- United States - Median household income

Spokane Community Indicators



# City of Spokane's incomes are considerably lower than county overall

start something **big**



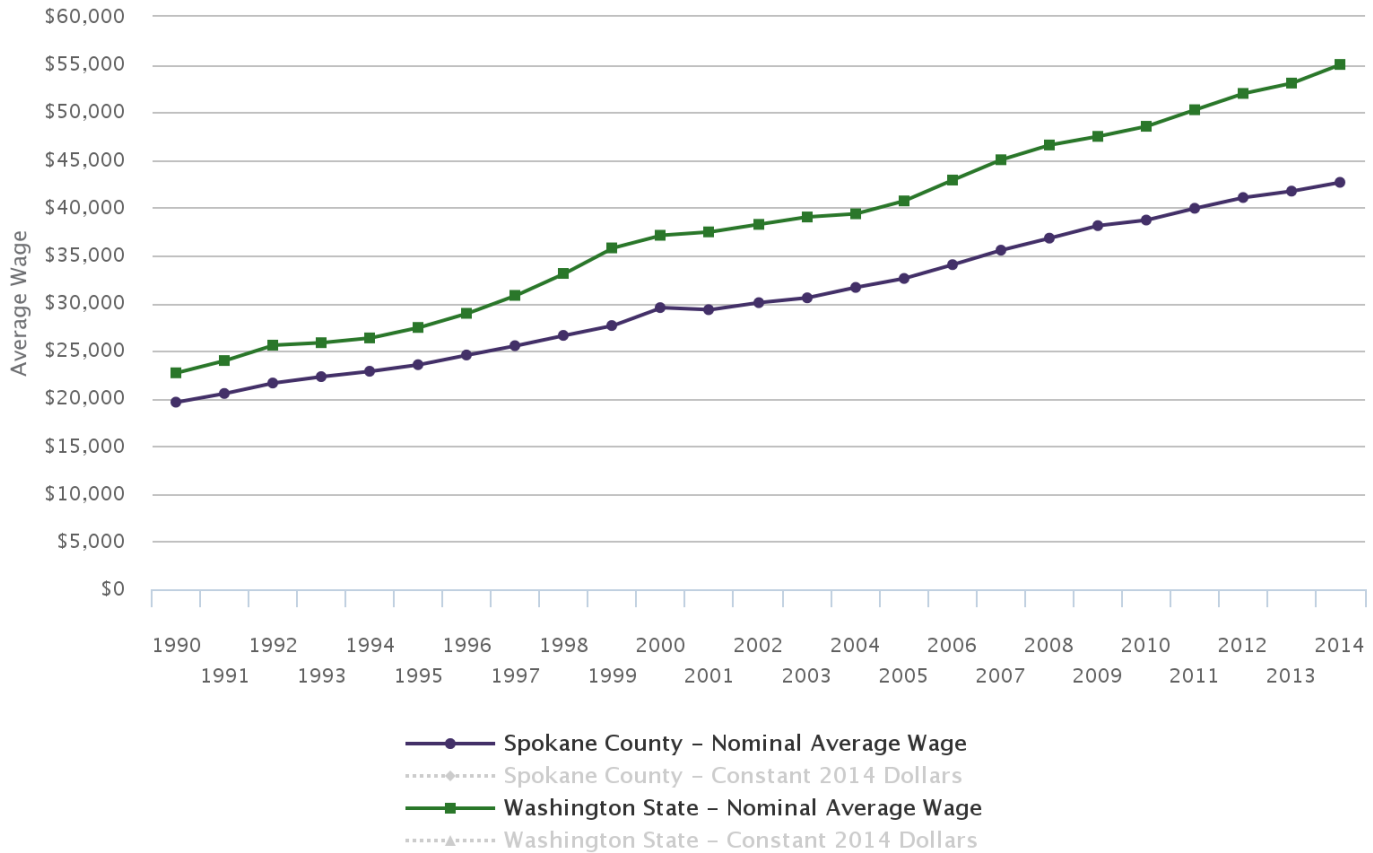
Spokane Community Indicators



# The County-wide issue is wages

start something big

### 2.1.4 Overall Average Annual Wage

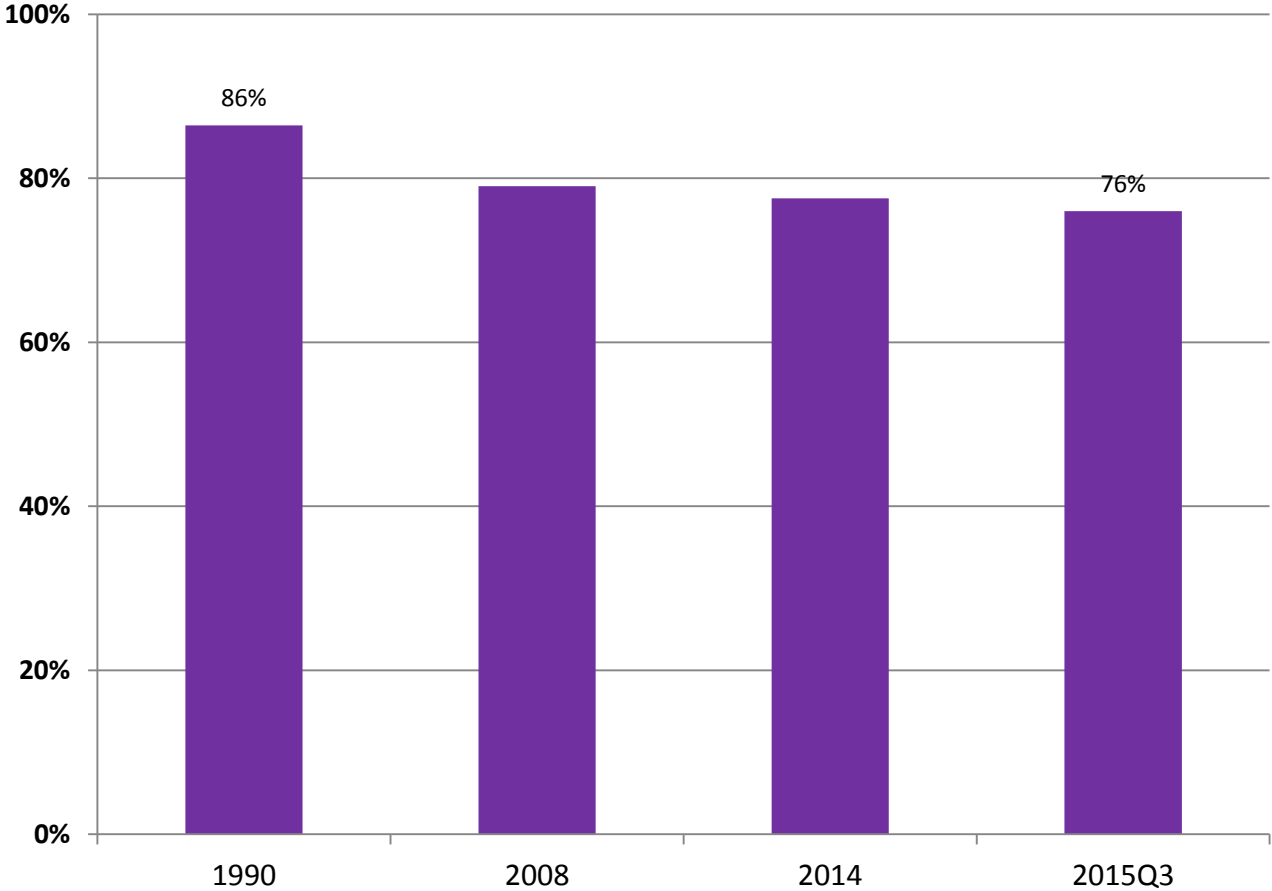


Spokane Community Indicators



# Ratio of Spokane County's average annual wage to WA's

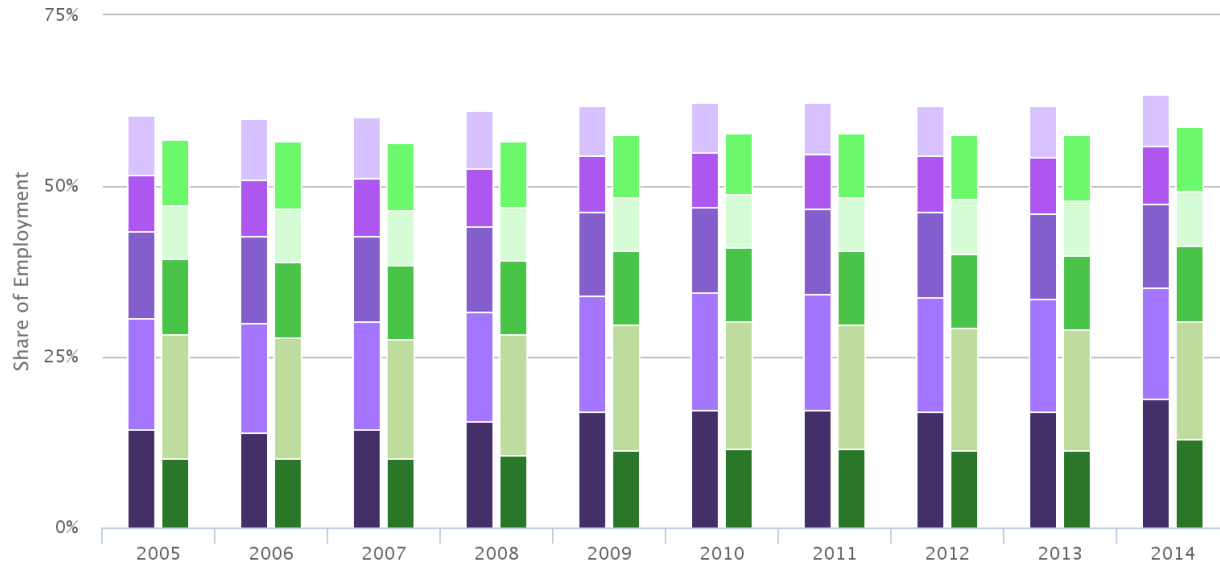
■ start something big



# Lower wages reflect sector make-up: Spokane's top 5 sectors by employment

start something **big**

2.4.5 Shares of Employment in Top Five Employing Sectors



- Spokane County - Health care and social assistance
- Spokane County - Government
- Spokane County - Retail trade
- Spokane County - Accommodation and food services
- Spokane County - Manufacturing
- Washington State - Health care and social assistance
- Washington State - Government
- Washington State - Retail trade
- Washington State - Accommodation and food services
- Washington State - Manufacturing

Spokane Community Indicators



EASTERN WASHINGTON UNIVERSITY

start something **big**

# Comparison of WA's highest paying industries to Spokane

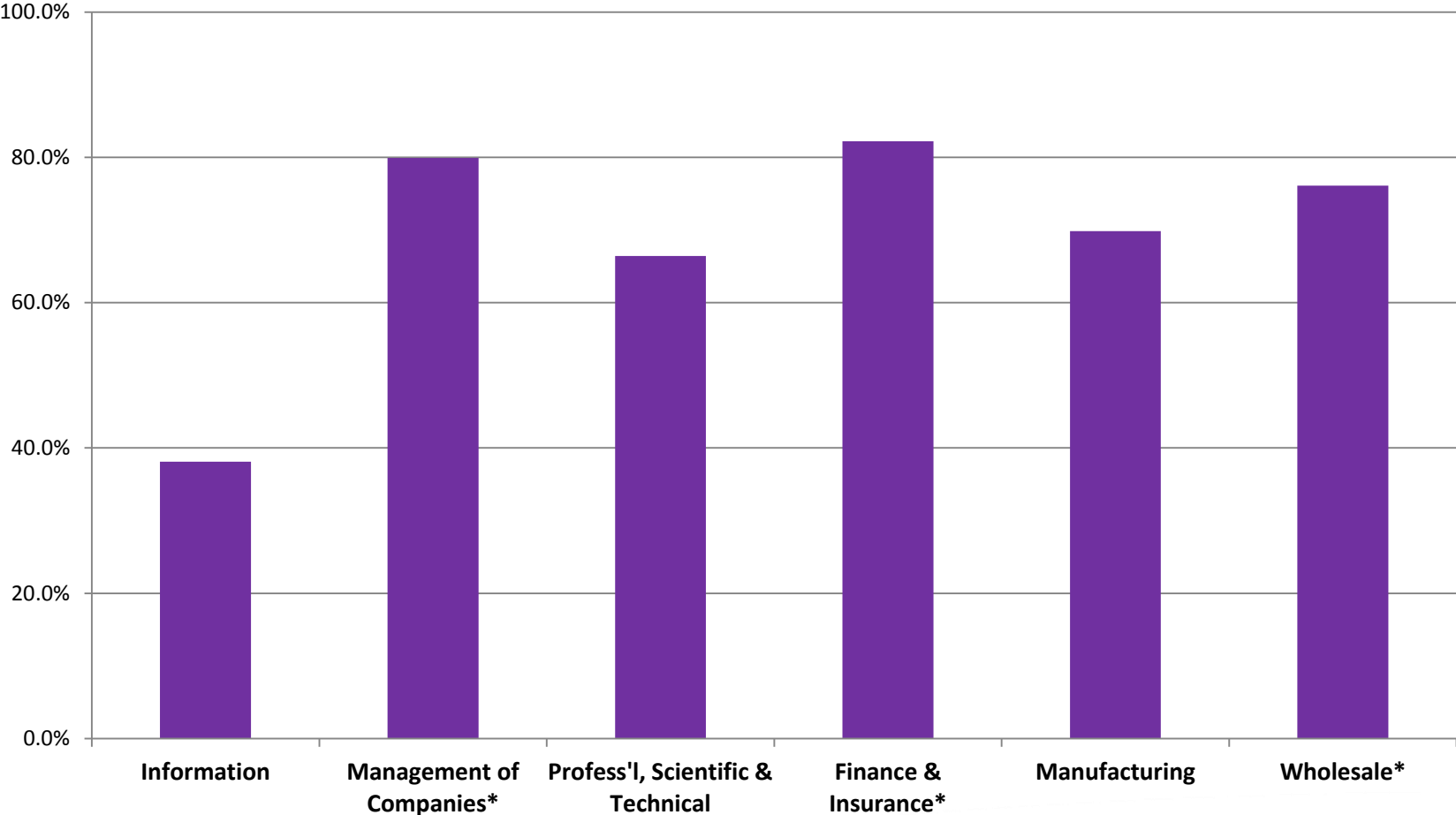
■ start something **big**

Sector	AA Wage in Washington (\$)	AA Wage in Spokane (\$)	WA LQ	Spokane LQ
Information	148,429	56,556	1.83	0.7
Management of Companies	106,518	85,128	0.85	0.97
Utilities	87,212	n/a	0.4	0.79
Profess'l, Scientific & Technical	84,883	56,393	0.97	0.71
Finance & Insurance	82,102	67,499	0.74	1.13
Manufacturing	74,303	51,898	1.08	0.84
Wholesale	70,169	53,394	1.01	1.16
Mining	63,404	n/a	0.12	0.09
<i>Sources: WA ESD "QCEW"; BLS "Location Quotient Calculator"</i>				



# Relatively high LQs probably don't compensate for lower salaries: Ratio of Spokane AA Wage to WA's

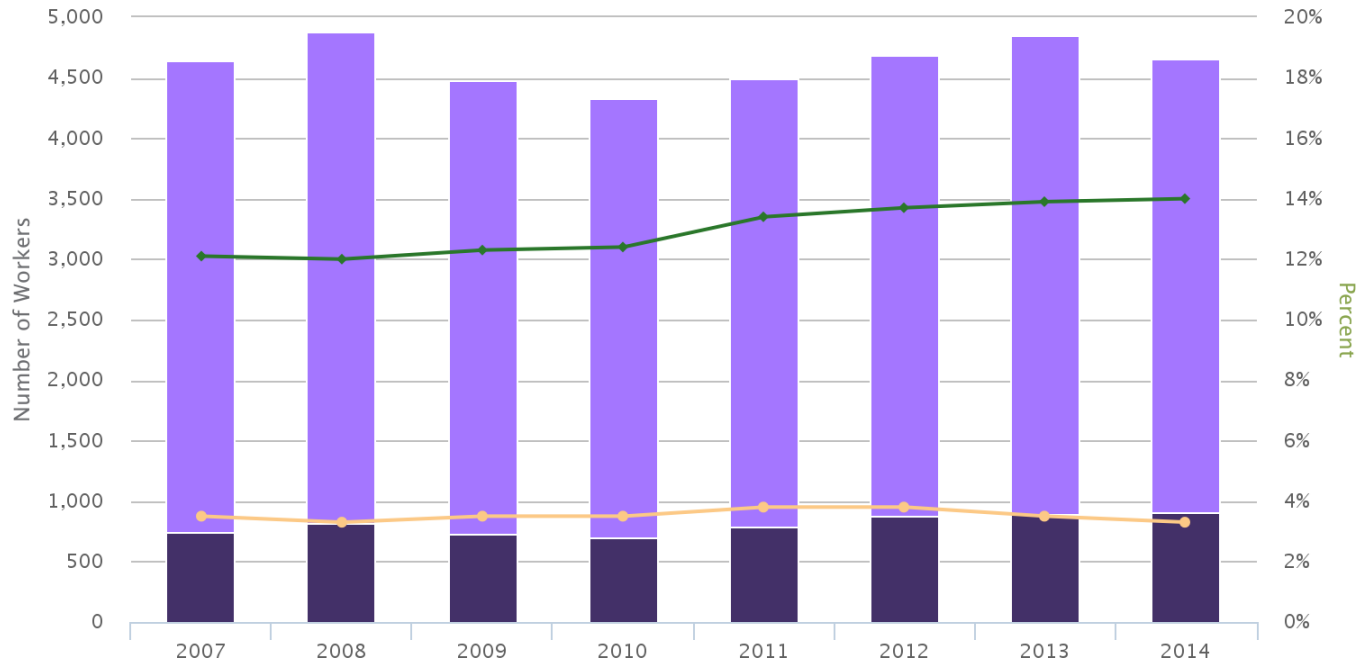
■ start something big



# Aerospace: A white knight for employment & salaries?

start something big

### 2.2.4 Growth in Spokane's Aerospace Cluster



- Spokane County - Workers in Aerospace Industries
- Spokane County - Workers in Aerospace Related Industries
- Spokane County - Aerospace Wages as a Share of Total Wages
- Washington State - Aerospace Wages as a Share of Total Wages

Spokane Community Indicators

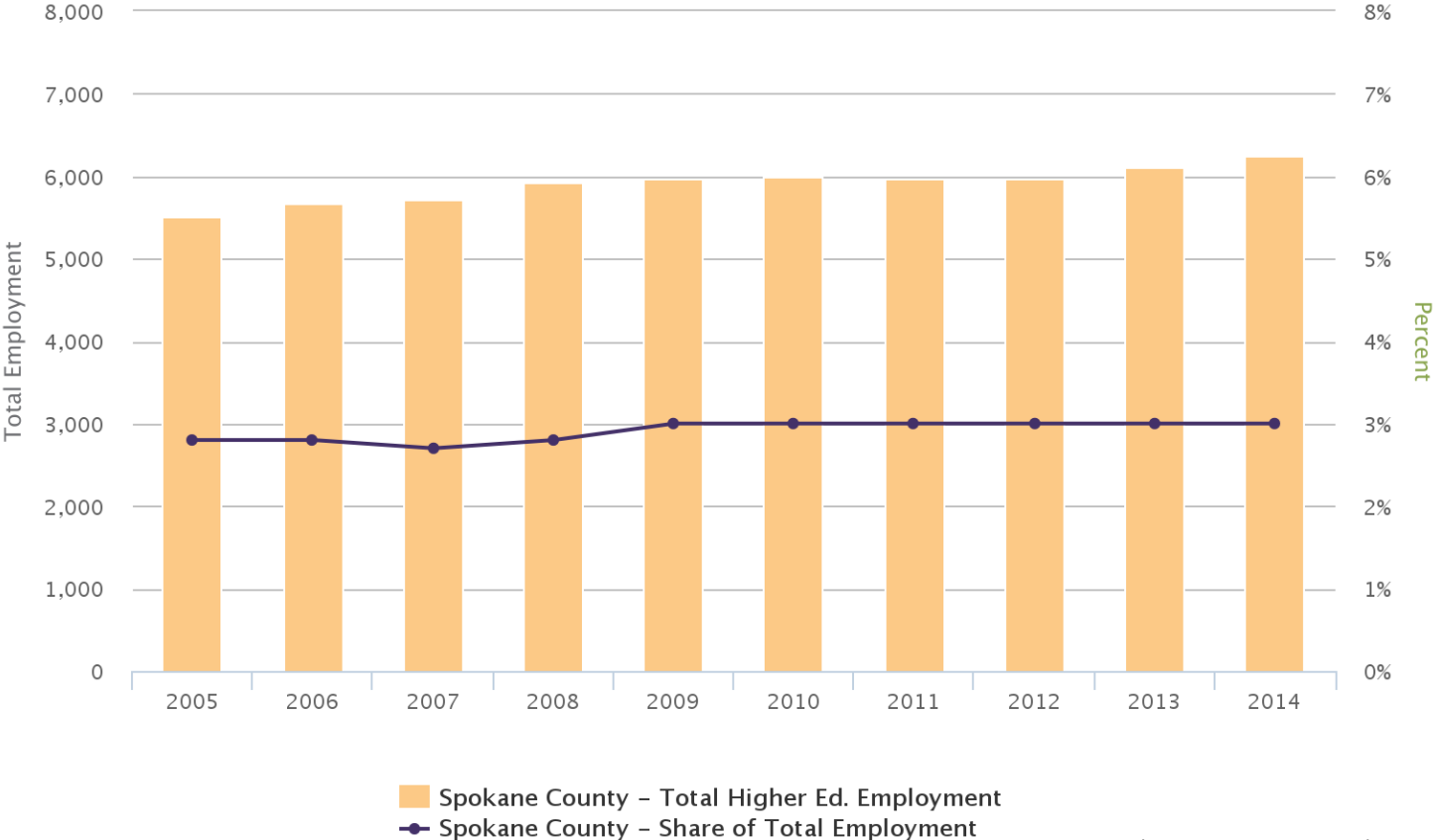




# Higher ed: another focus

start something big

### Total Employment in Public & Private Higher Education & Their Share of Total Employr



Spokane Community Indicators



# Now – not one, but two medical schools on either side of the Spokane River

start something **big**

WASHINGTON STATE UNIVERSITY  
HEALTH SCIENCES SPOKANE

FUTURE STUDENTS    CURRENT STUDENTS    RESEARCH    SERVICES    ABOUT    SEARCH

## WSU Medical School Ahead

WSU medical school  
working to meet high expectations

MAKE A GIFT

## EXPERIENCE WSU HEALTH SCIENCES SPOKANE

Pursue your health sciences goals with top-notch programs and small class sizes, from graduate and professional programs in the colleges of Medicine and Pharmacy to an array of degrees in the College of Nursing, Study Health Policy and Administration, Nutrition and Exercise Physiology, or Speech and Hearing Sciences. Or take advantage of the University's

**REQUEST  
INFORMATION**

**VISIT  
CAMPUS**

**APPLY  
NOW**

<https://spokane.wsu.edu/extra/2016/05/09/great-expectations/>



# While on the north side.....

start something **big**

## Academics

Subscribe to News     

### UW School of Medicine, Gonzaga Partnership to Welcome Spokane's Largest Incoming Class of Medical Students

Posted on May 3, 2016 in: [Academics](#), [Medical Education](#), [Spotlight](#), [Students](#)






Gonzaga President Thayne McCulloh and UW President Ana Mari Cauce at the announcement in February of the new medical education partnership between the two universities. (Photo by Rajah Bose)

SPOKANE, Wash. – As students begin the 2016-17 academic year, the University of Washington School of Medicine and Gonzaga University will welcome the largest-ever entering class of medical students in Spokane. In August 60 first-year medical students will head to dedicated facilities on the GU campus – also a first – to begin their medical training.

This increase in the Spokane class size to 60 entering students is a result of new funding last year from the Washington state Legislature to the UWSOM which added 20 medical school students in Spokane. Additionally, 40 UWSOM second-year medical students – the first class to experience the school's nationally recognized new medical school curriculum – will continue their education on the GU campus. Along with these 100 students experiencing innovative classroom training, hundreds more UWSOM medical students complete third- and fourth-year clinical training in physicians' practices in Spokane and surrounding communities.

"This is a significant milestone in our commitment to educate the next generation of health professionals for Eastern Washington and the state," said Ana Mari

#### Share Article

-  Facebook
-  Twitter
-  
-  Print
-  Send to a Friend
-  Share Article
-  RSS Feed

#### More Articles

« PREVIOUS ARTICLE



[College Rank Names The 50 Best College Art Museums](#)  
March 21, 2016 | Money

[Book Co-Edited by Gonzaga's Fernando Ortiz a Finalist for Catholic Publishing Award](#)

[Editorial: Editorial: GU-UW marriage is good news](#)  
February 26, 2016 | The Spokesman-Review

NEXT ARTICLE »



[Gonzaga, University of Washington partner in medical education](#)

[Gonzaga's 2016 Graduates Shine with Many Gifts](#)

[April 2016 Slideshow](#)

[March 2016 Slideshow](#)

#### Latest News Stories

[Gonzaga Receives Ignatian Medal for Hillyard Youth Collaborative](#)

[ZAGiving Benefits Area Families with Donations of Zag Students' Surplus Items](#)

[Gonzaga's 2016 Graduates Shine with Many Gifts](#)

[UW School of Medicine, Gonzaga Partnership to Welcome Spokane's Largest Incoming Class of Medical Students](#)

[Book Co-Edited by Gonzaga's Fernando Ortiz a Finalist for Catholic Publishing Award](#)

[Gonzaga Marketing & Communications Wins Blaze Award for 'Unfold' Brand Campaign](#)

[2016 Grad Profiles: Shelby Mills](#)

#### GU in the News



[College Rank Names The 50 Best College Art Museums](#)  
March 21, 2016 | Money

[Editorial: Editorial: GU-UW marriage is good news](#)  
February 26, 2016 | The Spokesman-Review

[Gonzaga, University of Washington partner in medical education](#)



#### Photo Galleries

[April 2016 Slideshow](#)

[March 2016 Slideshow](#)

- 
- 
- 
- 
- 



# How big an impact? The political value of consultants

start something **big**

The screenshot shows the top portion of a news website. At the top center is the logo for "JOURNAL OF BUSINESS" with the tagline "In Print · Online · On the Go" and "Serving Spokane & Kootenai Counties". To the right is a dark blue banner with white text: "250 Luxury Rooms & Suites", "14 Restaurants & Lounges", and "World-Class Gaming & more". Below the logo is a horizontal navigation menu with links: "LOCAL NEWS", "SPECIAL REPORT", "UP CLOSE", "REGULAR FEATURES", "E-EDITION", and "SPECIAL PUB". A secondary menu below that lists categories: "Real Estate", "Finance", "Health Care", "Education", "Government", "Retail", and "Manufacturing". At the bottom of the header area, a breadcrumb trail reads "Local News > Medical school aims to be rolling before end of decade".

## Medical school aims to be rolling before end of decade

Inland Northwest impact put at \$1.6 billion by 2030, but rests on assumptions

Kim Crompton February 24th, 2011

Share 0 Tweet 0 LinkedIn Share 0 Pinterest 0 Email 0 Print



# Thank you

■ start something **big**

D. Patrick Jones, Ph.D.

*Executive Director*

Institute for Public Policy & Economic Analysis

[dpjones@ewu.edu](mailto:dpjones@ewu.edu)

[www.ewu.edu/policyinstitute](http://www.ewu.edu/policyinstitute)

[www.spokanetrends.org](http://www.spokanetrends.org)

509.828.1246

